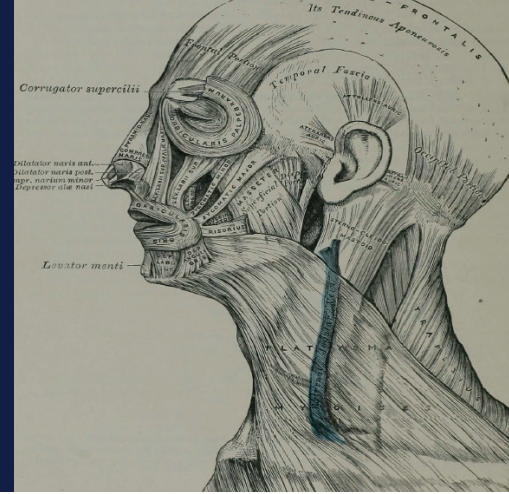


Wiley Digital Archives

CURRICULUM ACTIVITY



Royal College
of Physicians



Exploring your Course through Primary Sources

1) Access the [Wiley Digital Archives](#) platform*. Then look up one of the following words by using the search bar in the middle of the homepage screen:

- Medicine
- Anatomy
- Harvey
- Galen
- Vesalius
- Vaccination
- Inoculation
- Disease
- Lunatic
- Woman/Women
- Aphotecary(ies)
- Barber-surgeon
- Policy
- Law
- Regulation

2) Identify 3-5 primary sources related to that keyword that capture your attention. They can be maps, photographs, papers, charts, correspondence, or any other type. Pick multiple formats. Use the button *Add to list* to compile them.

- What is interesting about them?
- What elements can you find in these sources that you would have missed on a secondary source?
- Can you find any commonalities or themes among them?

3) Refine your search. Go back to your results page and click on *Revise*. Enter an additional term into your search based on the themes you have identified.

- Pick 2-5 primary sources as a result of this new search that build on your previous search.
- How do they relate to each other?
- What elements are surprising, compelling or challenging?

4) Using the *Analysis Hub* on the left-hand menu of the results page, let's take a more visual approach to your search results.

- Go to *Term Frequency*: Do you see any correlations over time? Are there any pronounced peaks? Are those related to any events?
- Click on *Term Groups*: Are there any noticeable insights?
- Try using *Collocations* or *Concordance*: What other relationships between these two terms and others do you spot? Click on the magnifying glass icon to explore results.

5) Tell a story. By now you should have 5-10 primary sources that captured your attention. Build a narrative with these sources. Report to your class.

- Include images of your sources. Be visual.
- Remember that you can download, print, crop, and save your sources when preparing for your presentation.

*You may need to authenticate through your library.

Need help getting started? Go to:
wileydigitalarchivestraining.com

WILEY