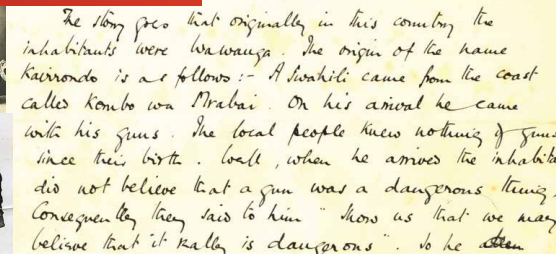
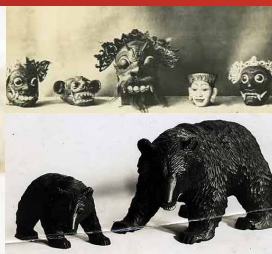
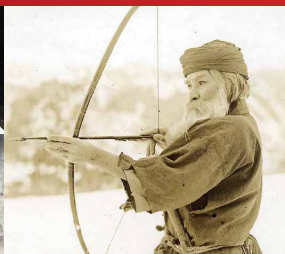
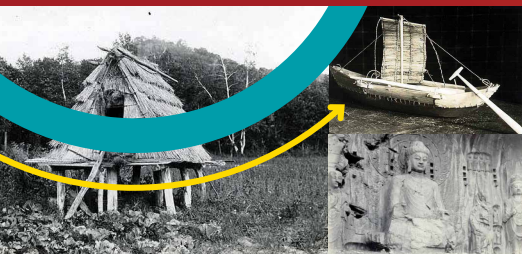




Royal Anthropological Institute

A WILEY DIGITAL ARCHIVES COLLECTION

Wiley
Digital
Archives



With a distinguished tradition of scholarship stretching over 150 years, the **Royal Anthropological Institute of Great Britain and Ireland (the Institute)** has been committed to its core goal of promoting public understanding of anthropology, education, and the contribution of anthropology to public affairs. The Institute is the world's oldest scholarly association dedicated to furthering anthropology in its broadest and most inclusive sense.

Accessible through the Wiley Digital Archives platform, the Royal Anthropological Institute of Great Britain and Ireland collection contains the vast range of original sources that have shaped over a century of academic progress, and represents a unique opportunity for scholars to reinvigorate their research with previously unexplored historical context.

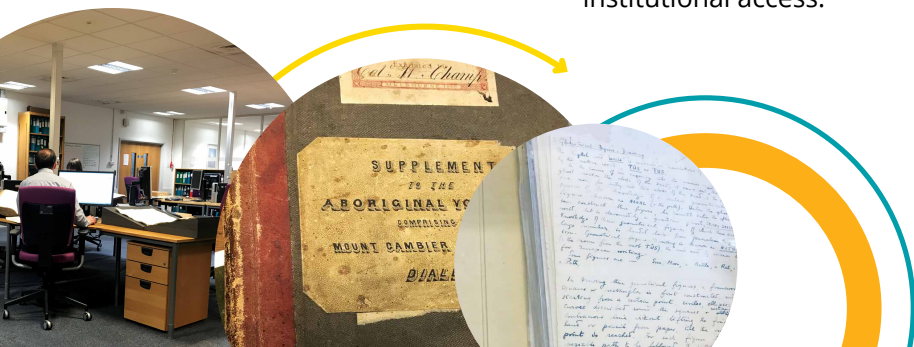
From archaeology and historical research to geographical and religious studies, the Wiley Digital Archives: Royal Anthropological Institute of Great Britain and Ireland collection contains an extensive body of diverse and interdisciplinary original materials, available to researchers via institutional access.

A range of unique materials include:

- Administrative Records
- Correspondence
- Data
- Ephemera
- Fieldwork
- Gray Literature
- Illustrations
- Manuscripts
- Maps
- Monographs
- Pamphlets
- Periodicals
- Personal Papers
- Photographs
- Proceedings
- Reports
- & More!

Spanning a vast range of disciplinary anthropological research:

- Anthropology
- Archaeology
- Colonial History
- Cultural Studies
- Dance
- Ethnic Studies
- Geography
- Gender Studies
- Area Studies (African, East Asian, Middle Eastern, Latin American, Caribbean, South Asian, Indian, Pakistani, and Pacific)
- & More!



WILEY

Peek inside the Collection



PERSONAL PAPERS

**Memory of the World,
Arthur Bernard
Deacon (1903–1927)**



PHOTOGRAPHS

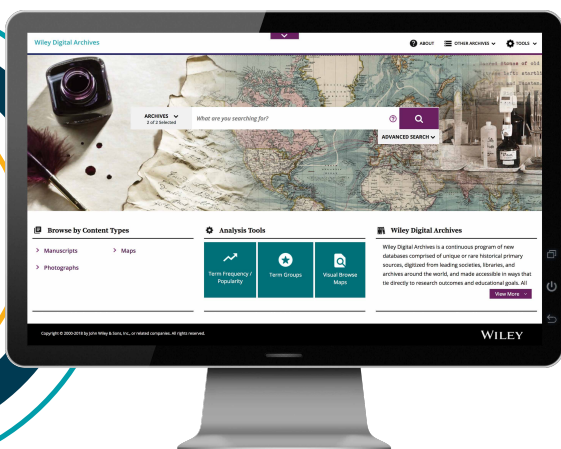
**Ethnographic
Photographic Library
(Originates in the 1860s)**



FIELDWORK

**Edward Horace
Man Collection**

The **Wiley Digital Archives** platform has been specifically designed to meet modern archival research needs.



- Intuitive interface
- Full-text searchability for printed documents
- Visual search results
- Enhanced metadata
- Downloadable optical character recognition (ocr) text
- Term frequency, chronology, and analysis tools
- Exportable datasets for charts, tables, statistics, and handwritten fieldwork notes
- Geotagged historical maps
- Textual analysis
- Headers—names, places, and dates—and core metadata have been manually keyed in
- Collections are browsable at archive, collection, box, and folder levels
- Print, download, save, and share documents

Learn more at wileydigitalarchives.com